

HAPPY KIDS HEALTHY ENVIRONMENT



**Starbus
SKOOL CNG**

TATA MOTORS

SAMPOORNA SEVA

HAR PAL AAPKE SAATH

TOLL-FREE NO. 1800 209 7979

- LARGEST SERVICE NETWORK
- ANNUAL MAINTENANCE CONTRACT
- TATA RUSHTRAM/DRIVEN
- TATA KAVACH
- TATA ALLIANCE
- PROUSE
- LARGEST PARTS-NETWORK
- TATA EXPRESS SERVICE
- TATA SERVICE PARTS
- LOYALTY REWARDS
- PRIORITY FIRST
- TATA OK

TATA MOTORS

For more information, please visit our website: www.buses.tatamotors.com. You can also contact our Sales Office: **Tata Motors Limited**, 4th Floor, Ahura Centre, 82, Mahakali Caves Road, MIDC, Andheri (East), Mumbai 400093 or call toll-free no. **18002097979**. Email: businfo@tatamotors.com

Tata Motors reserves the right to change and vary the design, technical details and specifications at any time, without prior notice, as per the Company's policy of continuous product improvement. The illustrations may show accessories and items of optional equipment, which are not part of standard specifications. Colours may vary slightly from those shown, owing to printing processes.

Starbus SKOOL CNG

When it comes to children's and environment's safety, Tata Motors goes an extra mile. Introducing **Tata Starbus Skool CNG** - a range of environment-friendly school buses that carries children with utmost comfort and safety, all the way to school and back. Tata Starbus Skool CNG is a cleaner means of transportation, thanks to higher fuel efficiency, lesser emission, and lesser running & maintenance costs. The bus incorporates an array of safety and comfort features that adhere to recommended Government guidelines, thereby ensuring high level of travel safety for school children.

Technology that stands out

The all-new Starbus Skool CNG range is the product of a fully automated manufacturing and assembly plant of Tata Motors Marcopolo Limited (TMML) located at Lucknow (UP). A state-of-the-art computer-aided design lab designs the structural components of the bus. TMML uses only high quality material for manufacturing these state-of-the-art buses. Built on the trusted BS4 platform, the bus bodies are made from high grade, high strength steel, to give them the robustness needed to undertake journeys day after day.

A-grade safety and comfort

Each Starbus Skool CNG is aesthetically designed and equipped with special 'child-safety' features that provide comfort, convenience and protection to the children travelling in it.



1 Fluorescent exterior



2 School Bus logo



3 Anti-skid flooring



4 STOP sign



5 First-aid kit



6 Safe upholstery



7 Lowered step



8 Childcare seats



9 Armrest



10 Tooth guard



11 Shoulder comfort



12 Hat-rack



13 Bottle-holder



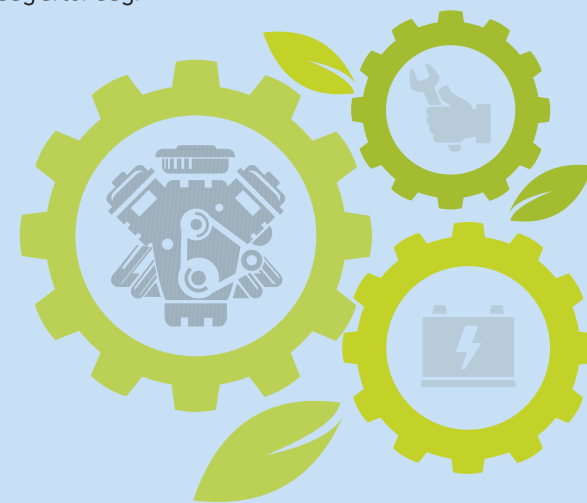
14 Collapsible handles



15 Grab handle



16 Spacious windows





17 Guide rails integrated with hat-racks



18 Padded windows



19 Window guard rails



20 Guarded driver saloon



21 Door alarm



22 STOP switches



23 Individual seat lap-belts



24 Emergency exit



Features

- Mitsubishi Scroll compressor & Spheros AC unit for LP 913 CNG
- Pneumatic door with sensitivity as standard fitment
- Best-in-class cooling in summer; high on efficiency
- Hatracks integrated with AC duct
- Individual louvres provided on each seats for maximum cooling comfort
- Special insulation in engine hood and body which increases cooling comfort

Starbus SKOOL CNG AC

Skip Fire



Skip fire mode: After attaining 60°C, if the engine remains for more than 15 sec at idle RPM, it gets shifted to Skip Fire mode. It means that the firing takes place only in 2 cylinders at a time rather than all 4 cylinders. This saves on CNG fuel considerably. The monitoring is through ECU.

Swagelok fittings



- Best in class leak proof & high reliability cylinder valves & piping fitted with safety device
- CNG Cylinder valve with inbuilt pressure relief devices (burst disc & fusible plug) & excess flow device ensures proper venting of gas from cylinder in hazardous conditions

Cylinder layout



- 4 nos. CNG cylinders with high 480/636 l CNG capacity
- Rigid CNG cylinder mounting - to withstand rugged application

Coil-on-plug



- Low maintenance as the coils (HT) are mounted directly on the spark plug, reducing the electrical & efficient working for better performance
- High uptime with easy fault diagnosis system; user-friendly

Battery cut-off switch



- Battery cut-off switch – to enhance safety as it disconnects the electricals from the system when the bus is stationary or during night halt

Rigid cylinder mounting



- Strong cylinder mounting arrangement ensures vibration free location
- Better ground clearance ensures damage free service to the CNG kit & less prone to water splashing under body, ensuring reliability & uptime

Within easy reach

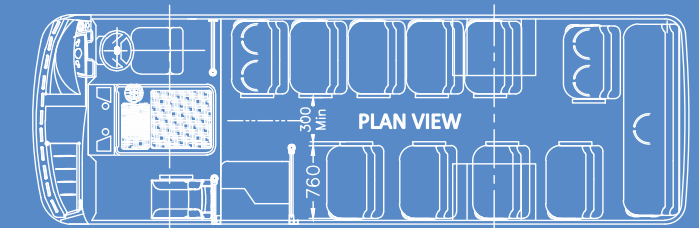
Starbus Skool CNG is also backed by the widest & best after-sales service & spares network in India. You can be sure of a Tata Motors service centre within your easy reach.



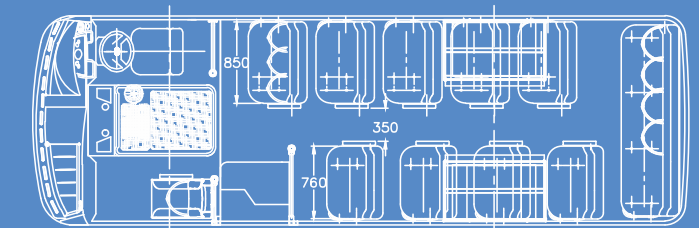
TECHNICAL SPECIFICATIONS

	Non-AC & AC		Non-AC		AC
	26-seater	30-seater	40-seater	50-seater	40-seater
Chassis Platform	LP 407/34 CNG BS4		LP 909/49 CNG BS4		LP 913/49 AC CNG BS4
Engine	TATA 3.8 SGI CNG ENGINE		TATA 3.8 SGI CNG ENGINE		TATA 5.7 SGI CNG ENGINE
Engine Power	64 kW @ 2500 r/min		64 kW @ 2500 r/min		97 kW @ 2500 r/min
Engine Torque	270 Nm @ 1500-1800 r/min		270 Nm @ 1500-1800 r/min		405Nm @ 1250-1500 r/min
Clutch Diameter	280 mm		280 mm		330 mm
Gearbox	GBS-27, 5 forward + 1 reverse		GBS-27, 5 forward + 1 reverse		GBS 40, 5 forward + 1 reverse
Brakes	Air Brakes with ABS		Air Brakes with ABS		Air Brakes with ABS
Suspension	Semi-elliptical or parabolic leaf spring at front & semi-elliptical leaf spring at rear		Semi-elliptical or parabolic leaf spring at front & semi-elliptical leaf spring at rear		Semi-elliptical or parabolic leaf spring at front & semi-elliptical leaf spring at rear
Anti-roll Bar	Yes		Yes		Yes
Steering	Power Steering		Power Steering		Power Steering
Battery	12 V, 120 Ah		12 V, 120 Ah		24 V, 150 Ah
Tyres	7.5X16, 16 PR		8.25 x 16 -16 PR		8.25 x 16 - 16 PR
Fuel Tank Capacity	310 l (90 L - 2 Nos & 65 L - 2 Nos)		480 l (150 L - 2 Nos. & 90 L - 2 Nos.)		636 l (198 L - 2 Nos. & 120 L - 2 Nos.)
Turning Circle Diameter	12300 mm		17500 mm		17500 mm
Max. GVW	6520 kg		9400 kg		9600 kg
BODY:					
Seating Capacity & Layout	26+1, 2X2	30+1, 3X2	40+1, 2X2	50+1, 3X2	40+1, 2X2
Structure	Galvanized tubular structure				
Floor	Anti-skid vinyl				
Passenger Door	1 jack-knife type door in Non AC & Pneumatic door in AC				
Front Windshield	Single piece laminated glass				
Rear Windshield	Single piece tempered glass				
Emergency Exits	1 breakable rear glass with hammer; 1 emergency window behind driver; door at rear RH side				
Fire Extinguisher	2 nos. 2 kg fire extinguishers		2 nos. 6 kg fire extinguishers		
First Aid box	One no. to be provided without medicines				
Side Windows	Full sliding glasses				
Step Lamp	Provided				
Hat-rack	Tubular hatrack in Non-AC bus and Hatrack integrated with AC duct in AC bus				
Window Guardrail	3 rows				
Fire Retardent Material	Yes				
Side Luggage Booth	No				
Overall Dimensions:					
Wheelbase	3400 mm		4920 mm		4920 mm
FOH	1430 mm		1430 mm		1430 mm
ROH	2040 mm		2950 mm		2950 mm
Overall Length	6870 mm		9300 mm		9300 mm
Overall Width	2200 mm		2200 mm		2200 mm
Overall Height	2900 mm		2900 mm		2900 mm

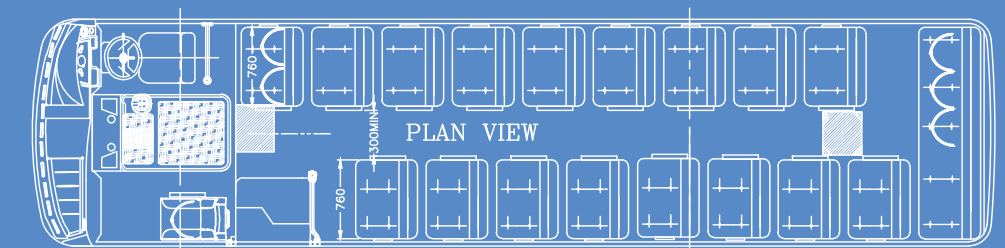
Starbus SKOOL CNG



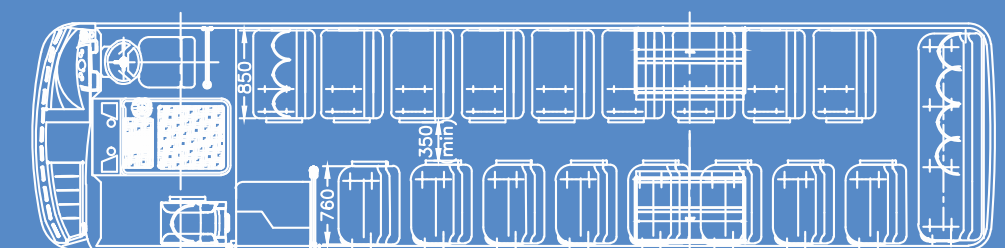
26 Seater



30 Seater



40 Seater



50 Seater